

Figure 1.1 Schematic of a typical microarray data analysis

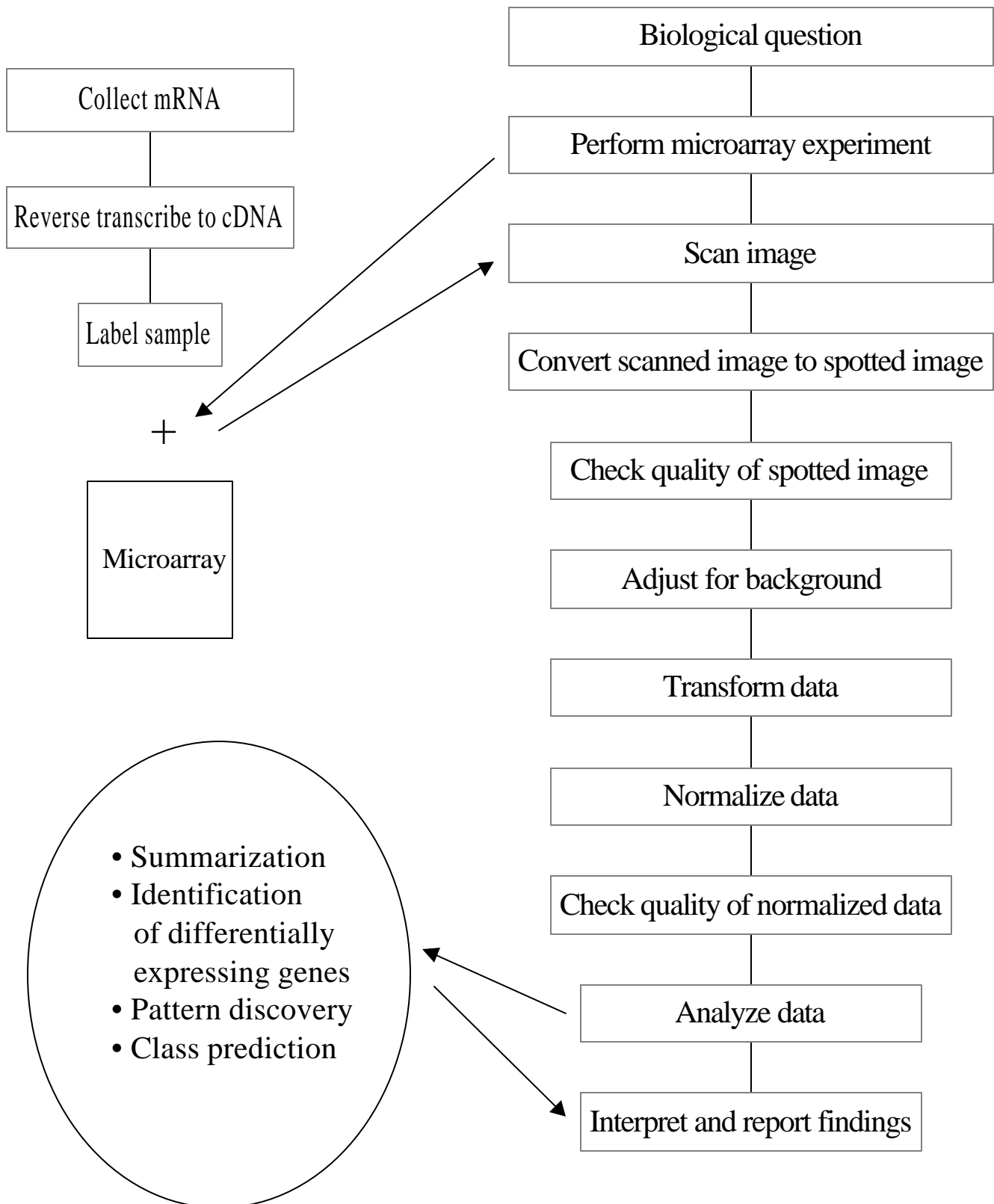


Figure 3.1 Comparing two samples by (a) scatterplot of intensities (b) histogram of fold changes (c) scatterplot of log intensities (b) histogram of log fold changes

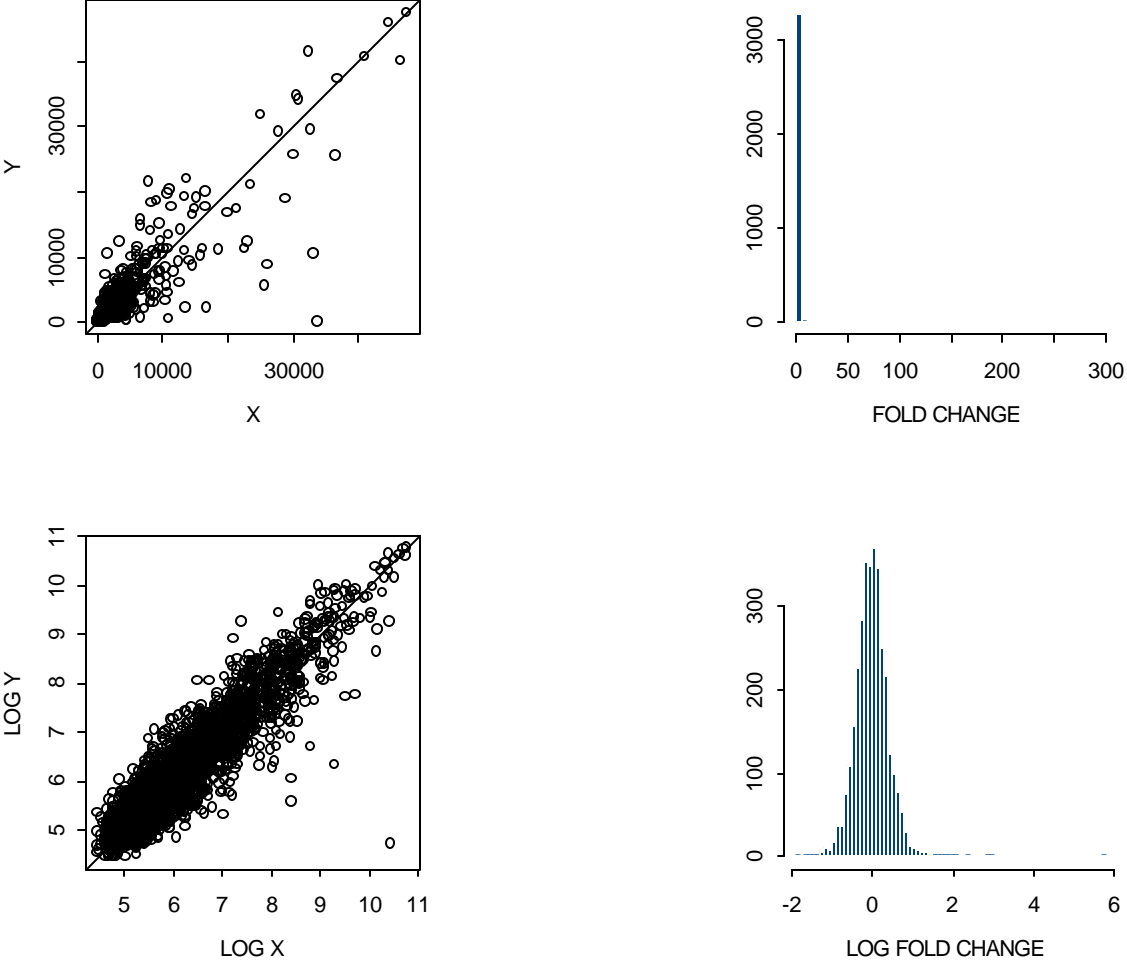


Fig 3.2 A single channel scanned image

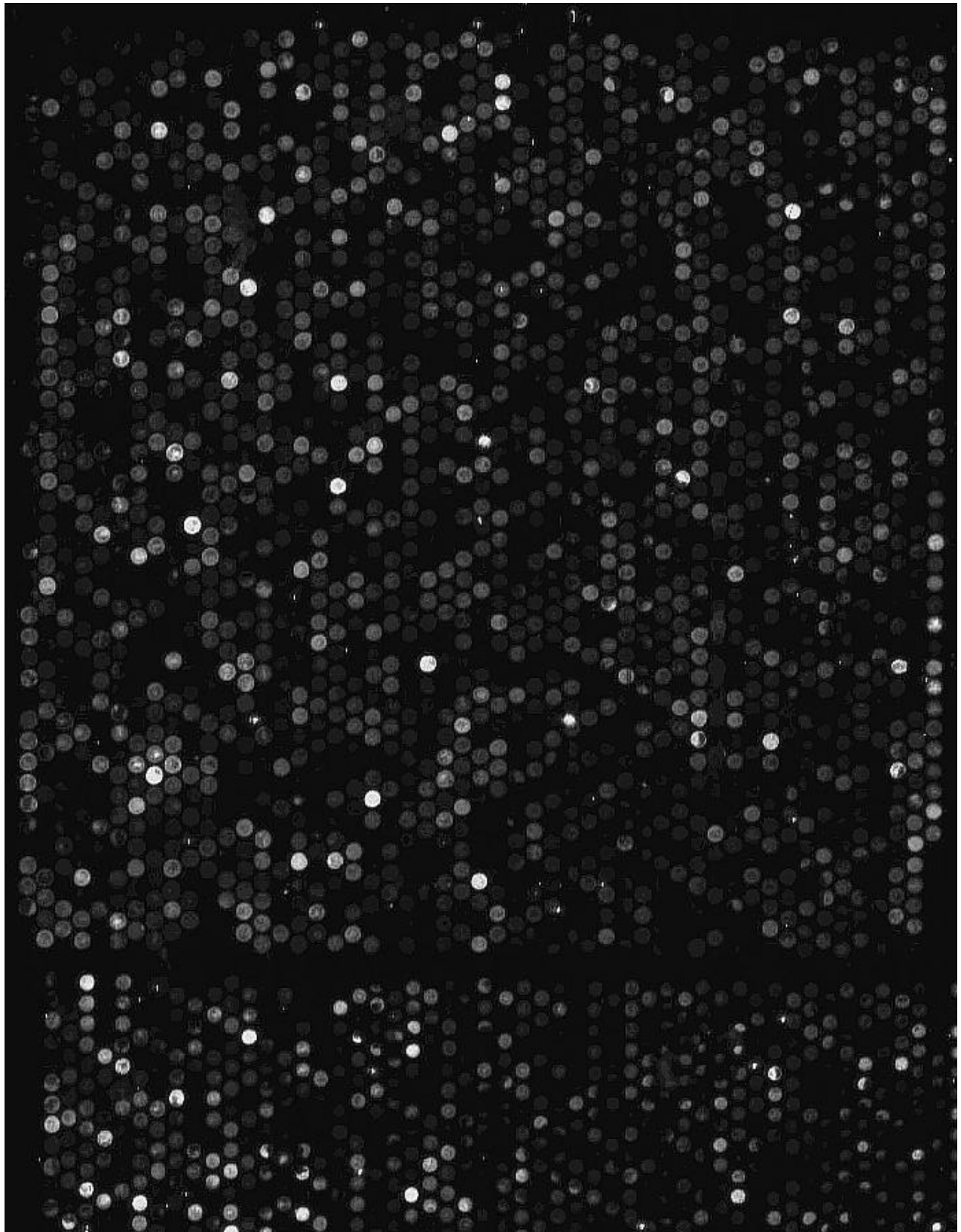
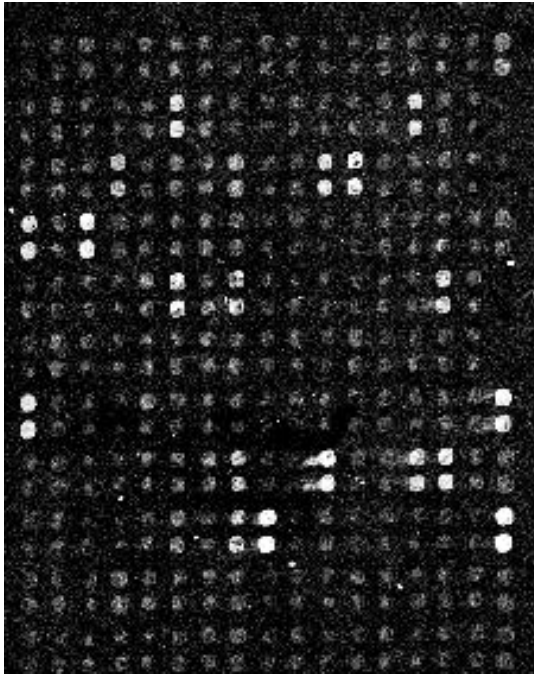


Figure 3.3 Scanned images from a small two channel microarray

Channel 1 (Control)



Channel 2 (Treated)

