

FOR RELEASE OCTOBER 12, 2011

EDITOR'S NOTE: ATTENTION POLITICAL, ASSIGNMENT EDITORS, Professor David Redlawsk may be contacted at 319-400-1134, 732-932-9384, ext. 285, or redlawsk@rutgers.edu. Visit <http://eagletonpollblog.wordpress.com> for commentary.

**RUTGERS-EAGLETON POLL FINDS OBAMA REBOUNDS IN NEW JERSEY;
VOTERS HAPPY CHRISTIE IS NOT RUNNING**

NEW BRUNSWICK, N.J – President Barack Obama's support in New Jersey has rebounded from its low in August, according to a new Rutgers-Eagleton Poll. Half of Garden State voters now say the president deserves a second term, up from 43 percent two months ago. At the same time, nearly two-thirds of voters are happy with Gov. Chris Christie's announcement that he will not run for president in 2012. Voters are somewhat unsure whether Christie has the personality to make a good president, with 47 percent agreeing, and 49 percent disagreeing, much along partisan lines.

"As the presidential race start to jell, President Obama may have benefited from Christie's decision to stay out," said poll Director David Redlawsk, a professor of political science at Rutgers University. "Had the governor jumped in, many New Jersey voters would have had a tougher decision: support the home state guy, or a Democratic president. What we're seeing now is at least some movement back to New Jersey's blue-state history. Even so, the election is far off and the Republican race is still not settled. Obama can take nothing for granted."

Results are from a poll of 903 adults, including a sample of 821 registered voters conducted among both landline and cell phone households from Oct. 6-9. The full sample of registered voters reported here has a margin of error of +/- 3.5 percentage points.

Obama re-elect returns to positive territory

Obama has seen a significant turnaround in his New Jersey favorability ratings since August, when more voters wanted to deny a second term than thought he deserved it. Half of voters now feel favorable toward the president, while 41 percent are unfavorable. Independent voters remain one of the keys to shifts in support. In August independents were very negative, with 49 percent unfavorable and 36 percent favorable. Independents are still slightly negative, but only by 47 percent to 41 percent. Democrats' favorability also has increased, from 76 percent in August to 83 percent.

Voters are also more positive about the president's job performance than they were in August: 38 percent give him an A or B grade, compared to only 33 percent in the summer. Meanwhile, 31 percent now give him a D or F, down from 37 percent.

As a result, by 50 percent to 42 percent, voters are more likely to say Obama deserves a second term. This compares to only 43 percent for re-election with 47 percent opposed two months ago. Democrats' support for re-election has increased 5 percent since August to 85 percent. Independents also have become slightly more positive; 50 percent oppose a second term, a drop of 5 points. Thirty-eight percent now say he deserves a second term, compared to 33 percent in August. "What Obama has going for him in New Jersey is simply that it is still a Democratic state when it comes to voting at the national level," said Redlawsk. "We also see some evidence that both Democrats and many independents are happier with Obama now as he more frequently defends his positions and blames Republicans for the gridlock in Washington."

Happy he's not running, voters give Christie improved ratings

New Jersey voters roundly agree with Christie's decision to not run for president: nearly two-thirds are happy he is not running. Just over half with a favorable impression of Christie are happy, as are three-quarters of those with an unfavorable impression. While only 54 percent of Republicans are pleased, 61 percent of independents and 72 percent of Democrat feel the same.

Those who like the governor also think he has the personality to be president: 76 percent agree that his personality "would help him be a successful president." Those less favorable disagree, with only 14 percent saying his personality would lead to success. Independents are split: 49 percent agree, 47 percent disagree. Still, 53 percent who think his personality would help him be a good president are happy he is not a candidate this time around.

Overall, Christie now enjoys a 49 percent to 39 percent favorability margin. In August, he was upside down, 45 percent to 47 percent. This improvement is mostly driven by independents, who now favor the governor by 19 points, up 17 points since August. Favorability among Democrats stands at 26 percent, a gain of six points over two months ago.

"Since our last poll, New Jersey has faced natural disasters and most observers say the governor handled them well," said Redlawsk. "That and his decision not to run for president leave us unsurprised about the improvement in Christie's favorability ratings. He is at the highest point since last December, but he still remains in the same relatively narrow range of support he has had since taking office."

Forty-four percent of voters grade Christie's job performance A or B; 38 percent did so in August. Those assigning failing or near-failing grades have declined from 42 percent to 28 percent.

Many Republicans remain unsatisfied with choices

While voters overall are pleased that Christie is not a candidate, GOP voters are more mixed, with 54 percent at least somewhat happy with the decision, and 39 percent somewhat or very unhappy.

Christie's decision, along with the failure of Texas Gov. Rick Perry to sustain his initial momentum, has left Republicans somewhat less satisfied with their options than they were immediately after Perry announced in August. At that time, 65 percent of a small sample of Republican and Republican-leaning voters was satisfied with their choices. Now, only 59 percent are, though more (11 percent) are very satisfied than in August (4 percent).

Former Massachusetts Gov. Mitt Romney appears to be benefiting from both Christie's decision and Perry's collapse. Among GOP and GOP-leaners, Romney has gained eight percentage points to 24 percent since August in an open-ended question about the party's nomination. Perry drops from 14 percent to 6 percent. Herman Cain, up to 10 percent from essentially no following, is well behind in second place. Despite not running, Christie remains third at 7 percent, followed by Perry. No other candidate gets more than 5 percent of mentions. Another 5 percent say they don't like any of the candidates and 38 percent are not sure who they support.

Tea Party Republicans continue to support Romney as Cain moves up and Perry down

Tea Party supporters (50 percent of New Jersey Republicans) are now just as likely to support Romney as are other Republicans, a gain of four points for Romney. Perry's support has dropped from 16 percent to 10 percent among Tea Party supporters. Cain, not even mentioned by Tea Party supporters in August, is now supported by 13 percent, second only to Romney. Minnesota Congresswoman Michelle Bachmann has fallen off the radar, from 8 percent to less than 3 percent.

The Republican nomination in New Jersey: stability and change

While Romney improves his lead in New Jersey, the GOP field appears very fluid. Perry's rapid rise and fall has left many Republicans searching for an alternative. "While Perry initially looked like a serious threat to Romney here, his performance has soured many Garden State Republicans, and Romney has pulled well away," said Redlawsk. "Cain, now second, is just the latest in a series of candidates Republican voters have considered. Whether he will have the staying power Bachmann and Perry lacked remains to be seen. With only one-quarter of Republicans willing or able to name Romney as their preferred candidate, there remains a lot of room in the race."

QUESTIONS AND TABLES BEGIN ON THE FOLLOWING PAGE

Rutgers-Eagleton Poll October 6-9, 2011
Questions and Tables

The questions covered in the release of October 12, 2011 are listed below. Column percentages may not add to 100% due to rounding. Respondents are Registered Voters.

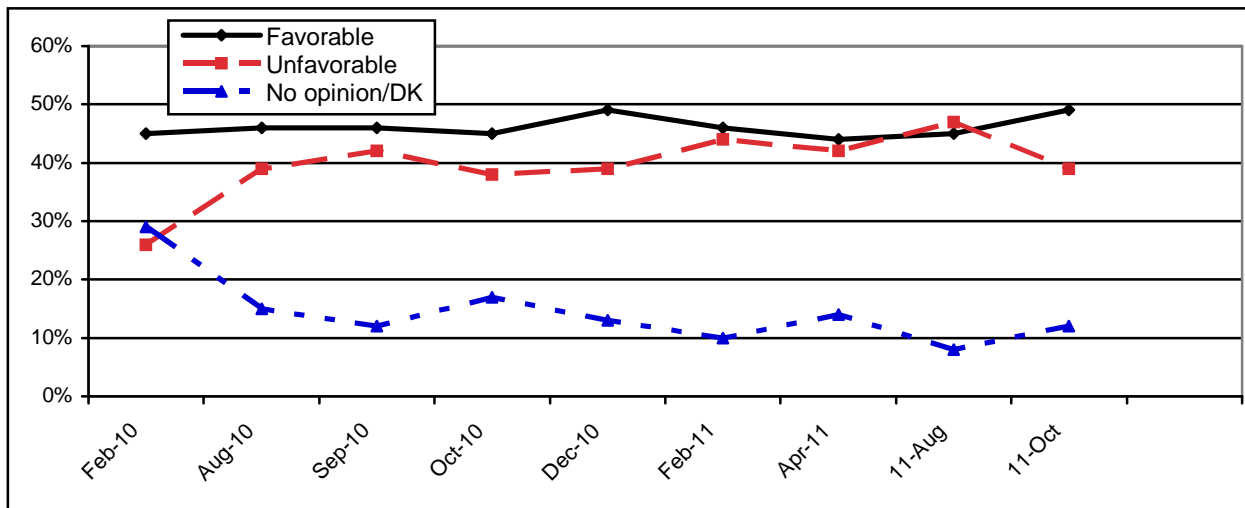
Q. I'd like to ask about some people and organizations. Please tell me if your general impression of each one is favorable or unfavorable, or if you do not have an opinion. [ROTATE]

Favorability Summary, October 2011

	Pres. Obama	Gov. Christie	U.S. Congress	Tea Party	Dems in Legisl	Reps in Legisl
Favorable	50%	49%	20%	22%	35%	24%
Unfavorable	40%	39%	62%	51%	40%	39%
No opn/DK	9%	12%	19%	27%	25%	28%
Unwght N	821	819	820	820	819	817

Governor Chris Christie Trend

	Oct 11 RV	Aug 11 RV	Apr 11 RV	Feb 11 RV	Dec 10 Voters	Oct 10 RV	Sept 10 RV	Aug 10 RV	Feb 10 RV
Favorable	49%	45%	44%	46%	49%	45%	46%	46%	45%
Unfavorable	39%	47%	42%	44%	39%	38%	42%	39%	26%
No Opn/DK	12%	8%	14%	10%	13%	17%	12%	15%	29%
N	819	613	769	810	665	879	911	751	881



	Party ID			Ideology			Education			
	Dem	Ind	Rep	Lib	Middle	Conserv	HS or Less	Some Coll	Coll Grad	Grad Work
Fav	26%	52%	87%	26%	47%	79%	46%	48%	55%	48%
Unfav	63%	33%	10%	63%	38%	18%	42%	38%	35%	44%
No Opin	10%	15%	4%	10%	15%	3%	11%	13%	10%	9%
DK	0%	1%	0%	1%	0%	0%	0%	1%	0%	0%
Unwght N	270	373	158	180	437	184	208	217	217	174

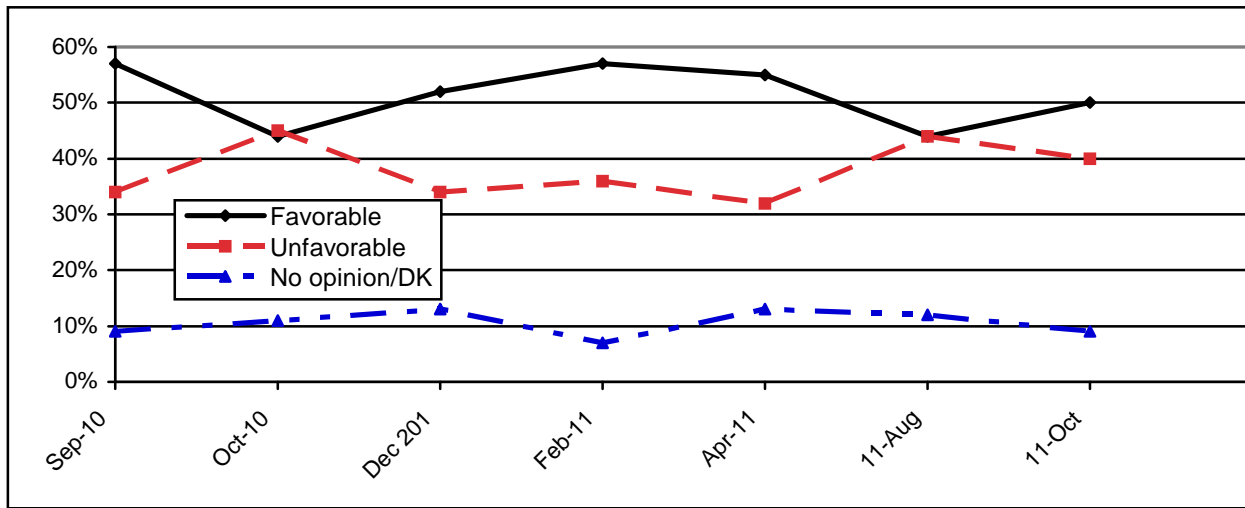
2012 Election, October 2011
Rutgers-Eagleton Poll

	Employment				Race				Age			
	Full Time	Part Time	Retired	Not Empl	White	Black	Hisp	Other	18-29	30-49	50-64	65+
Fav	45%	49%	60%	47%	59%	12%	28%	41%	33%	46%	51%	65%
Unfav	45%	40%	28%	37%	31%	70%	57%	49%	53%	42%	35%	28%
No Opin	9%	11%	11%	14%	10%	17%	15%	6%	12%	11%	14%	7%
DK	1%	0%	0%	2%	0%	1%	0%	4%	2%	1%	0%	0%
Unwght N	376	92	176	166	623	89	47	42	90	366	205	147

	Income				Gender		Union Household		
	> 50K	50K- <100K	100K- <150K	150K+	Male	Female	Private	Public	Not Union
Fav	42%	46%	55%	61%	54%	45%	55%	28%	53%
Unfav	44%	40%	36%	31%	36%	42%	31%	65%	35%
No Opin	13%	13%	9%	8%	9%	13%	13%	8%	11%
DK	1%	1%	0%	0%	1%	0%	0%	0%	1%
Unwght N	210	221	135	109	389	431	64	130	611

President Barack Obama Trend

	Oct 11 RV	Aug 11 RV	Apr 11 RV	Feb 11 RV	Dec 10 Adults	Oct 10 RV	Sep 10 RV
Favorable	50%	44%	55%	57%	52%	44%	57%
Unfavorable	40%	44%	32%	36%	34%	45%	34%
DK/No opinion	9%	12%	13%	7%	13%	11%	9%
N	821	609	769	810	904	548	909



2012 Election, October 2011
Rutgers-Eagleton Poll

	Party ID			Ideology			Education			
	Dem	Ind	Rep	Lib	Middle	Conserv	HS or Less	Some Coll	Coll Grad	Grad Work
Fav	83%	41%	8%	82%	48%	20%	54%	52%	47%	49%
Unfav	10%	47%	85%	13%	38%	77%	36%	40%	43%	42%
No Opin	7%	12%	7%	5%	13%	3%	10%	8%	10%	8%
DK	0%	0%	0%	0%	0%	0%	0%	0%	0%	0%
Unwght N	270	374	158	180	438	184	208	218	217	174

	Employment				Race				Age			
	Full Time	Part Time	Retired	Not Empl	White	Black	Hisp	Other	18-29	30-49	50-64	65+
Fav	51%	51%	47%	51%	43%	91%	48%	64%	58%	50%	46%	51%
Unfav	39%	34%	49%	38%	47%	4%	43%	21%	29%	41%	44%	44%
No Opin	10%	14%	4%	11%	9%	5%	10%	15%	13%	10%	10%	5%
DK	0%	0%	0%	0%	0%	0%	0%	0%	0%	0%	0%	0%
Unwght N	376	92	176	167	624	89	47	42	91	366	205	147

	Income				Gender		Union Household		
	> 50K	50K- <100K	100K- <150K	150K+	Male	Female	Private	Public	Not Union
Unfav	58%	54%	42%	46%	44%	56%	42%	60%	49%
No Opin	33%	39%	46%	49%	46%	35%	54%	31%	41%
DK	9%	7%	12%	5%	10%	9%	4%	9%	10%
Unfav	0%	0%	0%	0%	0%	0%	0%	0%	0%
Unwght N	211	221	135	109	390	431	64	130	612

[Order of Obama/Christie Job Performance Questions was Rotated]

Q. Please rate how Barack Obama is handling his job as President, using a grading scale from A to F, You can give him any full letter grade, A, B, C, D, or F.

	Trend...			
	Oct 11 RV	Aug 11 RV	Apr 11 RV	Feb 11 RV
A	10%	8%	14%	11%
B	28%	25%	32%	32%
C	30%	30%	27%	30%
D	14%	18%	16%	14%
F	17%	19%	20%	12%
DK	0%	1%	1%	1%
Unwght N	818	612	390	416

	Party ID			Ideology			Education			
	Dem	Ind	Rep	Lib	Middle	Conserv	HS or Less	Some Coll	Coll Grad	Grad Work
A	18%	8%	1%	16%	10%	6%	17%	10%	7%	18%
B	47%	23%	6%	47%	28%	10%	25%	31%	28%	47%
C	29%	32%	24%	29%	32%	23%	22%	34%	32%	29%
D	5%	17%	26%	4%	17%	20%	16%	11%	13%	5%
F	2%	20%	41%	3%	14%	41%	18%	14%	19%	2%
DK	1%	0%	1%	1%	0%	1%	2%	0%	0%	1%
Unwght N	269	372	158	180	436	184	208	218	215	173

**2012 Election, October 2011
Rutgers-Eagleton Poll**

	Employment				Race				Age			
	Full Time	Part Time	Retired	Not Empl	White	Black	Hisp	Other	18-29	30-49	50-64	65+
A	10%	3%	8%	16%	8%	23%	18%	3%	14%	10%	8%	10%
B	32%	31%	22%	25%	22%	50%	34%	46%	38%	30%	22%	27%
C	29%	39%	26%	28%	30%	23%	31%	34%	29%	30%	34%	23%
D	13%	13%	16%	14%	17%	3%	9%	10%	10%	13%	19%	14%
F	15%	13%	27%	15%	22%	1%	8%	7%	9%	16%	16%	26%
DK	0%	1%	1%	1%	1%	0%	0%	0%	0%	1%	0%	1%
Unwght N	373	92	176	167	623	89	47	41	90	365	204	147

	Income				Gender		Union Household		
	> 50K	50K- <100K	100K- <150K	150K+	Male	Female	Private	Public	Not Union
A	16%	11%	5%	7%	8%	13%	3%	11%	11%
B	30%	31%	31%	23%	26%	31%	25%	34%	27%
C	32%	27%	25%	33%	31%	28%	32%	32%	29%
D	12%	12%	17%	13%	16%	12%	15%	12%	15%
F	9%	19%	22%	25%	19%	15%	25%	11%	18%
DK	0%	0%	0%	0%	0%	1%	0%	0%	0%
Unwght N	211	219	135	109	390	428	64	130	610

Q. Please rate how Chris Christie is handling his job as governor, using a grading scale from A to F, You can give him any full letter grade, A, B, C, D, or F.

	Oct 11	Trend...		
	RV	Aug 11 RV	Apr 11 RV	Feb 11 RV
A	14%	13%	14%	14%
B	30%	25%	32%	24%
C	27%	18%	20%	26%
D	14%	24%	14%	15%
F	14%	19%	21%	19%
DK	1%	1%	0%	2%
N	817	612	390	416

	Party ID			Ideology			Education			
	Dem	Ind	Rep	Lib	Middle	Conserv	HS or Less	Some Coll	Coll Grad	Grad Work
A	2%	15%	36%	5%	11%	33%	15%	17%	15%	10%
B	21%	32%	42%	16%	33%	37%	25%	28%	36%	32%
C	34%	26%	14%	36%	27%	15%	28%	27%	24%	30%
D	16%	17%	4%	23%	14%	5%	13%	14%	13%	17%
F	25%	9%	2%	20%	14%	8%	17%	14%	13%	10%
DK	1%	0%	1%	1%	1%	1%	2%	0%	0%	1%
Unwght N	268	372	158	180	435	184	207	217	215	174

2012 Election, October 2011
Rutgers-Eagleton Poll

	Employment				Race				Age			
	Full Time	Part Time	Retired	Not Empl	White	Black	Hisp	Other	18-29	30-49	50-64	65+
A	12%	14%	21%	13%	17%	1%	13%	9%	9%	14%	13%	21%
B	31%	28%	28%	28%	34%	17%	19%	28%	26%	30%	33%	30%
C	25%	27%	30%	29%	26%	28%	25%	34%	31%	24%	25%	32%
D	14%	15%	11%	18%	13%	17%	18%	15%	21%	14%	15%	9%
F	16%	14%	9%	12%	9%	35%	25%	14%	12%	17%	14%	7%
DK	1%	2%	1%	0%	1%	1%	0%	0%	1%	1%	0%	2%
Unwght N	374	92	175	166	623	88	47	41	89	365	205	146

	Income				Gender		Union Household		
	> 50K	50K- <100K	100K- <150K	150K+	Male	Female	Private	Public	Not Union
A	14%	10%	14%	20%	15%	14%	14%	7%	16%
B	22%	31%	35%	37%	37%	24%	43%	14%	32%
C	30%	25%	24%	24%	23%	30%	23%	26%	27%
D	14%	21%	15%	9%	14%	14%	14%	25%	12%
F	19%	14%	11%	10%	11%	16%	7%	28%	12%
DK	1%	0%	1%	0%	0%	1%	0%	1%	1%
Unwght N	211	218	135	109	388	429	64	130	610

Q. Thinking about the 2012 Presidential election, does President Obama deserve to be re-elected to another term?

	Oct 11 RV	Trend Aug 11 RV
Yes	50%	43%
No	42%	47%
DK	9%	10%
N	816	610

	Party ID			Ideology			Education			
	Dem	Ind	Rep	Lib	Middle	Conserv	HS or Less	Some Coll	Coll Grad	Grad Work
Yes	85%	39%	7%	84%	48%	16%	56%	47%	48%	48%
No	8%	50%	86%	13%	41%	77%	36%	41%	45%	45%
DK	7%	11%	7%	3%	11%	7%	8%	12%	7%	8%
Unwght N	268	373	158	179	437	183	205	216	217	174

	Employment				Race				Age			
	Full Time	Part Time	Retired	Not Empl	White	Black	Hisp	Other	18-29	30-49	50-64	65+
Yes	51%	52%	43%	53%	40%	95%	55%	63%	64%	48%	47%	46%
No	39%	33%	53%	40%	51%	2%	36%	25%	28%	41%	47%	47%
DK	10%	15%	4%	7%	9%	3%	9%	12%	8%	10%	7%	7%
Unwght N	375	92	175	165	620	88	47	42	90	364	205	146

**2012 Election, October 2011
Rutgers-Eagleton Poll**

	Income				Gender		Union Household		
	> 50K	50K- <100K	100K- <150K	150K+	Male	Female	Private	Public	Not Union
Yes	55%	55%	48%	41%	46%	53%	44%	61%	48%
No	34%	39%	46%	52%	45%	39%	48%	36%	43%
DK	10%	6%	6%	8%	9%	8%	8%	4%	9%
Unwght N	211	221	134	108	387	429	64	130	607

[REPUBLICANS AND R LEANERS ONLY]

Q. In the Presidential election, which Republican would you prefer as the nominee to run against President Obama? Just tell me the name; if you don't know that's ok, just say so

[List of candidates receiving 3% or more of responses]

	ALL	Gender		Tea Party Impression		
		Male	Female	Fav	Unfav	No Opin
Mitt Romney	24%	25%	23%	24%	30%	19%
Herman Cain	10%	9%	10%	13%	8%	3%
Chris Christie	7%	7%	6%	4%	10%	9%
Rick Perry	6%	8%	3%	10%	2%	1%
Newt Gingrich	4%	3%	4%	7%	0%	0%
Ron Paul	3%	3%	3%	1%	4%	4%
Other Names	4%	4%	5%	4%	14%	4%
None of them	5%	6%	4%	4%	8%	3%
DK	38%	34%	41%	34%	24%	57%
Unwght N	244	129	115	120	55	65

Trend (Receiving 3% or more)

	Oct 11	Aug 11	Feb 11
	RV	RV	RV
	Rep/Lean	Rep/Lean	Rep/Lean
Mitt Romney	24%	16%	13%
Herman Cain	10%	-	-
Chris Christie	7%	6%	12%
Rick Perry	6%	14%	-
Newt Gingrich	4%	-	-
Ron Paul	3%	-	3%
Michelle Bachman	-	5%	-
Rudy Guilliani	-	4%	-
Sarah Palin	-	-	11%
Mike Huckabee	-	-	6%
Don't Know/None	43%	40%	42%
N	244	182	255

[REPUBLICANS AND R LEANERS ONLY]

Q. Given the Republicans who now say they are running for president in 2012, how satisfied are you with your choices? Are you very satisfied, somewhat satisfied or not satisfied?

	ALL	Gender		Tea Party Impression		
		Male	Female	Fav	Unfav	No Opin
Very satisfied	11%	10%	13%	19%	7%	1%
Somewhat satisfied	48%	47%	50%	56%	35%	48%
Not satisfied	32%	38%	27%	21%	56%	35%
DK	8%	5%	11%	5%	2%	16%
N=	247	130	117	120	55	67

[ALL RESPONDENTS]

Q. Governor Chris Christie has announced he is not going to run for president in 2012. Are you very happy, somewhat happy, somewhat unhappy or very unhappy that Governor Christie will NOT be a candidate for president?

Very happy	37%
Somewhat happy	27%
Somewhat unhappy	15%
Very unhappy	7%
DK	15%
Unwght N	818

	Party ID			Ideology			Education			
	Dem	Ind	Rep	Lib	Middle	Conserv	HS or Less	Some Coll	Coll Grad	Grad Work
Very happy	45%	35%	23%	38%	37%	33%	41%	37%	33%	37%
Some happy	27%	26%	31%	35%	25%	26%	21%	29%	31%	26%
Some unhappy	10%	14%	28%	6%	16%	23%	16%	13%	14%	17%
Very unhappy	5%	7%	11%	7%	6%	11%	9%	7%	8%	4%
DK	13%	18%	7%	15%	16%	7%	13%	14%	14%	16%
Unwght N	270	372	158	180	438	183	208	217	216	173

	Employment				Race				Age			
	Full Time	Part Time	Retired	Not Empl	White	Black	Hisp	Other	18-29	30-49	50-64	65+
Very happy	35%	38%	36%	39%	33%	60%	38%	34%	33%	37%	40%	34%
Some happy	25%	33%	29%	26%	31%	18%	18%	17%	26%	24%	30%	30%
Some unhappy	16%	7%	15%	17%	17%	6%	11%	14%	13%	16%	12%	16%
Very unhappy	7%	8%	9%	6%	7%	4%	14%	6%	6%	8%	5%	8%
DK	17%	15%	11%	11%	12%	13%	19%	29%	22%	14%	13%	12%
Unwght N	374	92	175	167	621	89	47	42	91	365	204	146

2012 Election, October 2011
Rutgers-Eagleton Poll

	Income				Gender		Union Household		
	> 50K	50K- <100K	100K- <150K	150K+	Male	Female	Private	Public	Not Union
Very happy	44%	33%	33%	30%	31%	42%	42%	40%	35%
Some happy	24%	31%	24%	31%	29%	25%	26%	22%	28%
Some unhappy	12%	11%	19%	18%	15%	15%	14%	16%	15%
Very unhappy	5%	8%	7%	11%	9%	6%	3%	8%	8%
DK	15%	17%	17%	9%	17%	13%	15%	15%	14%
Unwght N	211	219	135	109	389	429	64	130	609

Q. How much do you agree or disagree with this statement: Governor Christie's personality would help him be a successful president. Do you strongly agree, somewhat agree, somewhat disagree, or strongly disagree?

Strongly agree	20%
Somewhat agree	27%
Somewhat disagree	17%
Strongly disagree	32%
DK	4%
Unwght N	817

	Party ID			Ideology			Education			
	Dem	Ind	Rep	Lib	Middle	Conserv	HS or Less	Some Coll	Coll Grad	Grad Work
Strongly agree	7%	21%	43%	8%	16%	42%	22%	23%	15%	20%
Some agree	21%	28%	37%	18%	31%	28%	25%	26%	34%	22%
Some disagree	19%	18%	12%	22%	17%	14%	16%	15%	18%	21%
Str disagree	49%	29%	7%	51%	31%	13%	33%	30%	30%	36%
DK	4%	5%	1%	2%	4%	3%	4%	6%	3%	2%
Unwght N	269	371	158	179	437	183	207	217	216	173

	Employment				Race				Age			
	Full Time	Part Time	Retired	Not Empl	White	Black	Hisp	Other	18-29	30-49	50-64	65+
Strongly agree	19%	15%	24%	20%	24%	3%	9%	22%	13%	22%	18%	22%
Some agree	26%	32%	29%	26%	31%	11%	26%	14%	26%	24%	25%	37%
Some disagree	17%	18%	15%	19%	16%	22%	15%	17%	24%	16%	19%	13%
Str disagree	36%	33%	25%	26%	25%	58%	48%	35%	29%	35%	34%	22%
DK	2%	1%	6%	8%	4%	6%	2%	11%	8%	2%	4%	6%
Unwght N	373	92	176	166	620	89	47	42	91	365	202	147

	Income				Gender		Union Household		
	> 50K	50K- <100K	100K- <150K	150K+	Male	Female	Private	Public	Not Union
Strongly agree	16%	20%	25%	23%	23%	17%	19%	14%	21%
Some agree	26%	28%	23%	32%	26%	28%	37%	15%	29%
Some disagree	14%	19%	19%	12%	17%	18%	18%	17%	17%
Str disagree	38%	30%	29%	32%	30%	33%	24%	52%	28%
DK	6%	3%	4%	1%	4%	4%	3%	2%	4%
Unwght N	210	220	135	107	389	428	64	130	608

Rutgers-Eagleton Poll October 6-9, 2011
New Jersey Statewide Poll

The Rutgers-Eagleton Poll was conducted by telephone from October 6-9, 2011 with a scientifically selected random sample of 903 New Jersey adults. This sample contains a weighted subsample of 821 registered voters used in this release. Data are weighted to represent known parameters in the New Jersey population, using gender, age, race, and Hispanic ethnicity matching to US Census Bureau data. All results are reported with these weighted data. This telephone poll included 723 landline respondents supplemented with 180 cell phone respondents, acquired through random digit dialing.

All surveys are subject to sampling error, which is the expected probable difference between interviewing everyone in a population versus a scientific sampling drawn from that population. The sampling error for 821 registered voters is +/-3.5 percent, at a 95 percent confidence interval. Thus if 50 percent of New Jersey voters favored a particular position, one would be 95 percent sure that the true figure would be between 53.5 and 46.5 percent (50 +/-3.5) had all New Jersey voters been interviewed, rather than just a sample. Sampling error increases as the sample size decreases, so statements based on various population subgroups are subject to more error than are statements based on the total sample. Sampling error does not take into account other sources of variation inherent in public opinion studies, such as non-response, question wording or context effects.

This Rutgers-Eagleton Poll was fielded by Braun Research Incorporated. The questionnaire was developed and all data analysis was completed in house. The Rutgers-Eagleton Poll is paid for and sponsored by the Eagleton Institute of Politics, Rutgers University, a non-partisan academic center focused on the study and teaching of politics and the political process.

Weighted Sample Characteristics
821 New Jersey Registered Voters

35% Democrat	48% Male	13% 18-29	70% White
47% Independent	52% Female	44% 30-49	11% Black
18% Republican		23% 50-64	13% Hispanic
		19% 65+	4% Asian
			3% Other/Multiracial