

EMBARGOED UNTIL 12:01 A.M. FRIDAY, NOV. 18, 2011

EDITOR'S NOTE: ATTENTION POLITICAL, ASSIGNMENT EDITORS, Professor David Redlawsk may be contacted at 319-400-1134, 732-932-9384, ext. 285, or redlawsk@rutgers.edu until 11 p.m. Visit <http://www.rci.rutgers.edu/~redlawsk/EP/Tables2012/EmbargoRelease.html> for questions and tables during embargo. Visit <http://eagletonpollblog.wordpress.com> for additional commentary.

**RUTGERS-EAGLETON POLL: NEW JERSEYANS LIKE PRESIDENT OBAMA,
LESS SO HIS JOB PERFORMANCE;
GOV. CHRISTIE'S POSITIVE RATINGS GROW STRONGER**

NEW BRUNSWICK, N.J – President Obama continues to make a favorable impression on New Jersey registered voters, according to a new Rutgers-Eagleton Poll. More than half (52 percent) now view the president favorably, significantly better than in August, when his popularity stood at 44 percent. Thirty-seven percent view him unfavorably.

However, the Nov. 8 legislative elections uncovered some risk for Obama: those who actually voted are slightly less positive, with 50 percent favorable and 41 percent unfavorable. While New Jerseyans generally like the president, his job performance is much weaker – only 37 percent of respondents grade him “A” or “B” and 32 percent assign a “D” or “F.”

In contrast, New Jersey Gov. Chris Christie gets higher ratings from those who voted and has substantially better job performance numbers than the president: 46 percent grade the governor A or B, while 30 percent assign a D or F. While 49 percent of registered voters view Christie favorably, 54 percent of actual voters feel positive. Christie is viewed unfavorably by 37 percent of registered and 36 percent of actual voters.

“Both Obama and Christie have seen improved ratings since the summer, but Christie in particular is doing well in this otherwise blue state,” said poll Director David Redlawsk, a professor of political science at Rutgers University. “Even as his favorability ratings remain stable, Christie’s job performance numbers are improving most likely because New Jerseyans credit his leadership credit his leadership through several recent crises, including the October snowstorm. But people appear to like Obama himself better than they like his job performance.”

Results are from a survey of 753 respondents drawn from a list of New Jersey registered voters, including 392 respondents who voted in the Nov. 8 legislative races. The survey was conducted from Nov. 9-12. The sample of registered voters has a margin of error of +/- 3.6 percentage points, while the voter sample has a margin of +/-5.0 percentage points.

Grading Obama's job performance

While 52 percent of registered voters hold a favorable impression of Obama, only 15 percent give his job performance an A. Another 48 percent grade it B. One-third says his stewardship merits only a C. Conversely, 43 percent of those with an unfavorable impression of the president fail Obama's job performance and another 32 percent assign him D. Only 22 percent of Obama's detractors say his job performance rates as high as C.

"Many New Jerseyans who like the President personally are less than thrilled with his job performance, while those with an unfavorable impression are brutally negative," said Redlawsk. "This suggests an enthusiasm gap, where negative job ratings are reinforced by a personal dislike of Obama, while positive views of him are offset by doubts about his performance."

Obama's job performance is viewed even more skeptically by those who actually voted in the recent election: 37 percent of registered voters grade the president A or B but 32 percent of actual voters give him top marks. Thirty-two percent of registered and 35 percent of actual voters handed out grades of D or F.

"While the difference is relatively small, an electorate less positive about the president means a tougher time getting re-elected," said Redlawsk. "We know turnout will be substantially higher than in this off-year election, likely drawing more Democrat-leaning voters. Obama's chances are at least in part dependent on how much enthusiasm he can generate, and right now that's a real challenge for him."

Democrats show positive, but relatively weak support for Obama's job performance; 43 percent grade him B, only 11 percent A. One in six Democrats is decidedly negative, grading Obama's job performance D or F. Support among registered voters unaffiliated with either party is evenly split, with 33 percent awarding an A or B and 31 percent a D or F. Among independents who voted last week, the president does noticeably worse, with 22 percent positive awarding A or B grades and 33 marking him D or F.

"This reinforces the point that turnout makes a difference," said Redlawsk. "Casual voters seem more inclined to be positive toward Obama, but it also takes more work to get them to the polls."

Christie's ratings a study in contrast to Obama

Despite the loss of one Republican seat in the New Jersey General Assembly and the failure of GOP candidates to win any of the senate races in which he campaigned, post-election Christie has maintained the improved ratings he has received since August. His favorable rating matches well with his job performance rating. With a 49 percent favorable to 37 percent unfavorable rating, the governor is given an A or B by 46 percent of respondents while only 30 percent give a D or F, a 16-point net

positive margin compared to Obama's five-point margin.

Christie is doing much better than Obama among independents. Unaffiliated registered voters rate the governor's performance favorably: 45 percent grade him A or B and 33 percent D or F. Independents who voted are even stronger supporters of the governor's job performance with nearly half (49 percent) giving him at least a B.

Christie's job performance is also more highly rated by his own party than is Obama's. Just over a third of registered Republicans award the governor an A compared to the 11 percent of Democrats who do the same for Obama. Nearly 40 percent more give him a B. Crossing party lines, Democrats rate Christie much better than Republicans do Obama: 33 percent A or B by Democrats for Christie compared to 11 percent of Republicans giving those positive grades to Obama.

Those who have a favorable impression of Christie back that up with strong support for his job performance. More than one-third (35 percent) award Christie an A, more than twice the percentage of Obama supporters who give the President an A. About half (48 percent) give Christie a B. Thus, more than eight in 10 of those favorable toward Christie are also positive about his job performance, much more than Obama's 63 percent.

"By and large, Christie seems to have solidified his support, both in terms of general favorability as well as job performance," said Redlawsk. "The contrast with the president is very clear. Where Obama's supporters seem lukewarm about his job performance, Christie supporters are quite clear about how pleased they are right now."

###

QUESTIONS AND TABLES BEGIN ON THE FOLLOWING PAGE

Questions and Tables

The questions covered in the release of November 18, 2011 are listed below. Column percentages may not add to 100% due to rounding. Respondents are Registered Voters (RV) or Voters in the Nov. 8, 2011 Legislative Election as indicated.

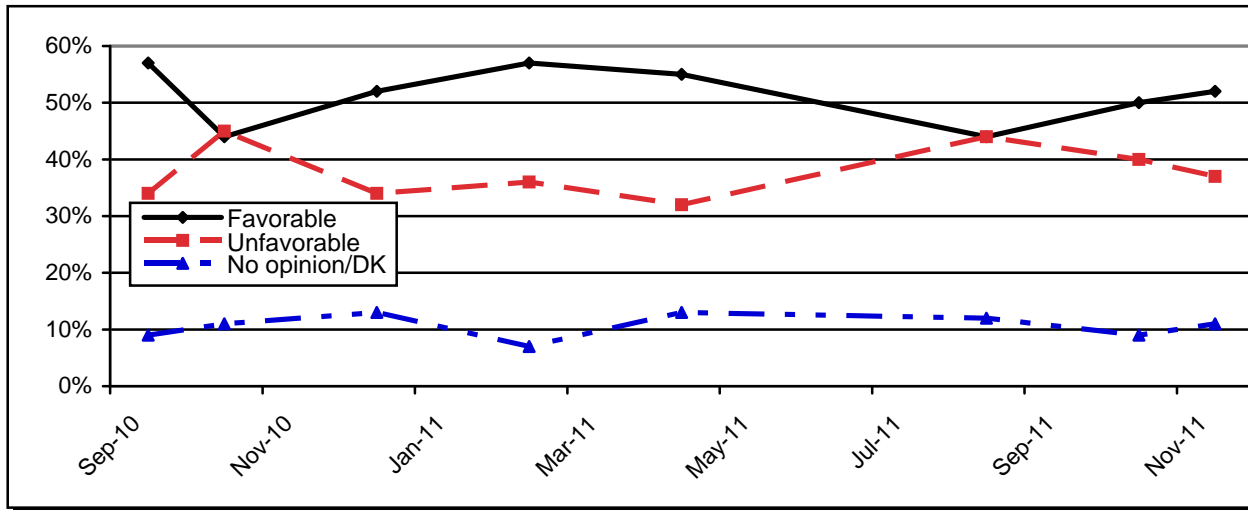
Q. I'd like to ask about some people and organizations. Please tell me if your general impression of each one is favorable or unfavorable, or if you do not have an opinion. [ROTATE]

	Pres. Obama		Gov. Christie	
	RV	Voters	RV	Voters
Favorable	52%	50%	49%	54%
Unfavorable	37%	41%	37%	36%
No opn/DK	11%	9%	14%	10%
Unwgt N=	753	392	752	392

President Barack Obama Trend

	Nov 11 RV	Nov 11 Voters	Oct 11 RV	Aug 11 RV	Apr 11 RV	Feb 11 RV	Dec 10 Adults	Oct 10 RV	Sep 10 RV
Favorable	52%	50%	50%	44%	55%	57%	52%	44%	57%
Unfavorable	37%	41%	40%	44%	32%	36%	34%	45%	34%
DK/No opin	11%	9%	9%	12%	13%	7%	13%	11%	9%
Unwgt N=	753	392	804	609	769	810	904	548	909

Registered Voters



Registered Voters

	Party ID			Ideology			Education			
	Dem	Ind	Rep	Lib	Mod	Cons	HS or Less	Some Coll	Coll Grad	Grad Work
Fav	77%	48%	23%	84%	57%	10%	55%	53%	52%	50%
Unfav	17%	36%	70%	14%	29%	82%	36%	36%	38%	35%
DK/No Opin	7%	15%	7%	2%	14%	9%	9%	11%	9%	15%
Unwgt N=	316	217	220	154	410	170	173	184	210	183

**Obama / Christie Evaluation, November 2011
Rutgers-Eagleton Poll**

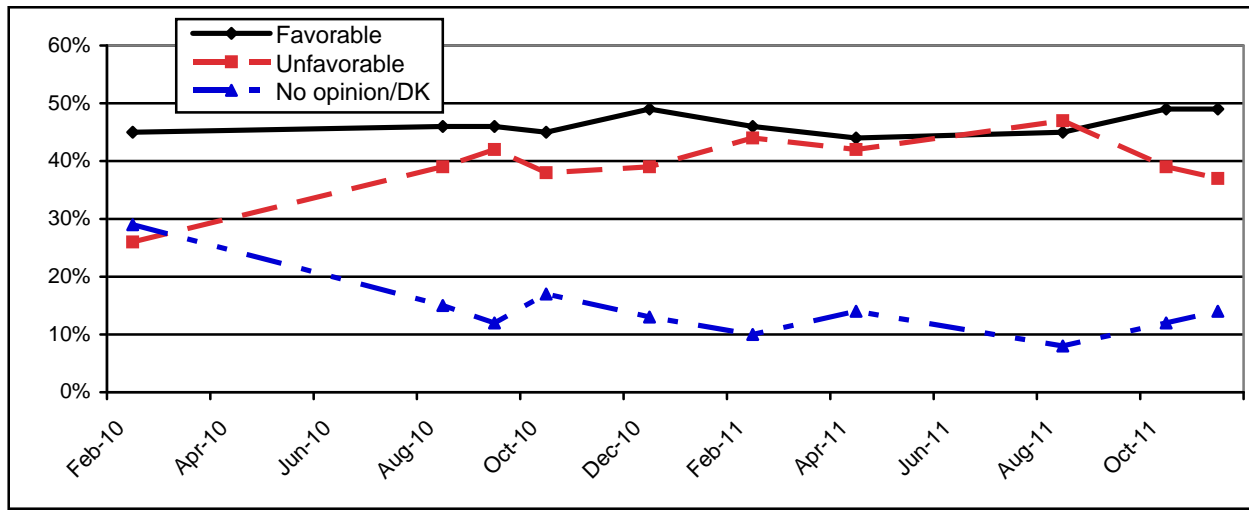
	Employment				Race		Age			
	Full Time	Part Time	Retired	Not Empl	White	Black	18-29	30-49	50-64	65+
Fav	52%	58%	45%	58%	41%	97%	78%	49%	50%	43%
Unfav	35%	33%	46%	35%	47%	1%	15%	37%	40%	47%
DK/No Opin	13%	9%	9%	7%	12%	2%	7%	14%	10%	9%
Unwgt N=	359	68	222	99	596	64	28	246	246	222

	Income				Gender		Union Household		
	<50K	50K- <100K	100K- <150K	150K+	Male	Female	Private	Public	Not Union
Fav	59%	55%	47%	45%	50%	55%	57%	57%	51%
Unfav	32%	35%	40%	41%	37%	36%	42%	29%	39%
DK/No Opin	9%	9%	13%	14%	12%	9%	1%	14%	10%
Unwgt N=	163	213	141	102	353	400	56	121	563

Governor Chris Christie Trend

	Nov 11 RV	Nov 11 Voters	Oct 11 RV	Aug 11 RV	Apr 11 RV	Feb 11 RV	Dec 10 Voters	Oct 10 RV	Sept 10 RV	Aug 10 RV	Feb 10 RV
Favorable	49%	54%	49%	45%	44%	46%	49%	45%	46%	46%	45%
Unfavorable	37%	36%	39%	47%	42%	44%	39%	38%	42%	39%	26%
No Opn/DK	14%	10%	12%	8%	14%	10%	13%	17%	12%	15%	29%
Unwgt N=	752	392	803	613	769	810	665	879	911	751	881

Registered Voters



Registered Voters

	Party ID				Ideology			Education			
	Dem	Ind	Rep	Lib	Mod	Cons	HS or Less	Some Coll	Coll Grad	Grad Work	
Fav	36%	47%	73%	23%	46%	82%	48%	45%	49%	54%	
Unfav	53%	35%	18%	66%	39%	7%	36%	39%	36%	39%	
DK/No Opin	11%	18%	9%	11%	15%	12%	17%	16%	15%	7%	
Unwgt N=	315	217	220	154	409	170	172	184	210	183	

Obama / Christie Evaluation, November 2011
Rutgers-Eagleton Poll

	Employment				Race		Age			
	Full Time	Part Time	Retired	Not Empl	White	Black	18-29	30-49	50-64	65+
Fav	48%	47%	58%	40%	56%	22%	32%	50%	46%	63%
Unfav	39%	40%	35%	33%	35%	55%	41%	35%	45%	29%
No Opin	12%	13%	7%	28%	10%	23%	27%	15%	10%	8%
Unwgt N=	359	68	221	99	595	64	28	246	245	222

	Income				Gender		Union Household		
	<50K	50K- <100K	100K- <150K	150K+	Male	Female	Private	Public	Not Union
Fav	45%	43%	47%	64%	57%	41%	55%	23%	55%
Unfav	41%	38%	42%	28%	31%	43%	34%	63%	33%
No Opin	15%	19%	11%	7%	12%	15%	11%	14%	12%
Unwgt N=	162	213	141	102	353	399	56	121	562

[Order of Obama/Christie Job Performance questions was rotated]

Q. Please rate how Barack Obama is handling his job as President, using a grading scale from A to F, You can give him any full letter grade, A, B, C, D, or F.

	Nov 11		<i>Trend...</i>			
	Voters	Nov 11 RV	Oct 11 RV	Aug 11 RV	Apr 11 RV	Feb 11 RV
A	6%	9%	10%	8%	14%	11%
B	27%	28%	28%	25%	32%	32%
C	32%	31%	30%	30%	27%	30%
D	16%	15%	14%	18%	16%	14%
F	20%	17%	17%	19%	20%	12%
DK	0%	0%	0%	1%	1%	1%
N=	392	753	801	612	390	416

Registered Voters

	Party ID			Ideology			Education			
	Dem	Ind	Rep	Lib	Mod	Cons	HS or Less	Some Coll	Coll Grad	Grad Work
A	11%	9%	3%	11%	10%	3%	14%	14%	4%	4%
B	43%	24%	11%	47%	29%	6%	28%	18%	32%	34%
C	29%	34%	27%	33%	36%	16%	26%	29%	37%	31%
D	8%	16%	24%	5%	15%	25%	14%	18%	11%	20%
F	8%	15%	36%	4%	10%	50%	19%	21%	16%	12%
DK	0%	0%	0%	0%	0%	0%	1%	1%	0%	0%
N=	316	217	220	154	410	170	173	184	210	183

*Obama / Christie Evaluation, November 2011
Rutgers-Eagleton Poll*

	Employment				Race		Age			
	Full Time	Part Time	Retired	Not Empl	White	Black	18-29	30-49	50-64	65+
A	7%	1%	13%	15%	5%	44%	13%	8%	5%	12%
B	29%	39%	20%	27%	23%	44%	30%	32%	28%	19%
C	35%	31%	25%	27%	33%	9%	40%	30%	33%	24%
D	15%	14%	16%	15%	18%	1%	6%	18%	17%	14%
F	14%	14%	26%	16%	21%	2%	11%	12%	17%	30%
DK	0%	1%	0%	1%	0%	0%	0%	1%	0%	0%
N=	359	68	222	99	596	64	28	246	246	222

	Income				Gender		Union Household		
	<50K	50K- <100K	100K- <150K	150K+	Male	Female	Private	Public	Not Union
A	16%	7%	5%	2%	4%	13%	3%	5%	9%
B	24%	32%	31%	23%	30%	26%	34%	33%	26%
C	27%	29%	36%	39%	36%	27%	29%	40%	29%
D	15%	14%	13%	21%	13%	17%	19%	13%	16%
F	17%	17%	15%	15%	17%	17%	14%	9%	19%
DK	1%	0%	0%	0%	0%	0%	0%	0%	0%
N=	163	213	141	102	353	400	56	121	563

Q. Please rate how Chris Christie is handling his job as governor, using a grading scale from A to F, You can give him any full letter grade, A, B, C, D, or F.

	Nov		<i>Trend...</i>			
	Voter	Nov 11 RV	Oct 11 RV	Aug 11 RV	Apr 11 RV	Feb 11 RV
A	18%	18%	14%	13%	14%	14%
B	31%	28%	30%	25%	32%	24%
C	24%	21%	27%	18%	20%	26%
D	16%	17%	14%	24%	14%	15%
F	11%	13%	14%	19%	21%	19%
DK	0%	2%	1%	1%	0%	2%
N=	391	752	799	612	390	416

Registered Voters

	Party ID			Ideology			Education			
	Dem	Ind	Rep	Lib	Mod	Cons	HS or Less	Some Coll	Coll Grad	Grad Work
A	6%	20%	34%	4%	14%	46%	24%	14%	19%	17%
B	27%	25%	39%	16%	31%	33%	21%	29%	29%	35%
C	29%	19%	13%	35%	19%	13%	20%	22%	20%	22%
D	20%	20%	5%	27%	18%	4%	17%	13%	20%	17%
F	17%	13%	9%	18%	16%	1%	16%	20%	9%	8%
DK	2%	3%	0%	0%	2%	2%	1%	2%	3%	1%
N=	315	217	220	154	409	170	173	184	210	182

*Obama / Christie Evaluation, November 2011
Rutgers-Eagleton Poll*

	Employment				Race		Age			
	Full Time	Part Time	Retired	Not Empl	White	Black	18-29	30-49	50-64	65+
A	17%	10%	24%	20%	21%	9%	15%	16%	18%	25%
B	30%	33%	28%	20%	30%	20%	17%	35%	24%	31%
C	22%	21%	19%	19%	22%	19%	16%	22%	22%	22%
D	17%	28%	10%	18%	16%	11%	29%	15%	18%	8%
F	13%	5%	16%	18%	9%	38%	20%	10%	16%	11%
DK	0%	2%	3%	5%	1%	3%	3%	2%	0%	3%
N=	358	68	222	99	596	63	28	246	245	222

	Income				Gender		Union Household		
	<50K	50K- <100K	100K- <150K	150K+	Male	Female	Private	Public	Not Union
A	22%	12%	17%	26%	22%	15%	12%	7%	22%
B	21%	28%	30%	36%	33%	24%	34%	18%	30%
C	15%	24%	29%	15%	18%	24%	34%	21%	21%
D	19%	20%	15%	15%	17%	17%	8%	33%	14%
F	21%	14%	9%	7%	8%	18%	12%	20%	12%
DK	3%	3%	0%	1%	2%	2%	1%	1%	2%
N=	163	213	140	102	353	399	56	121	562

Rutgers-Eagleton Poll November 9-12, 2011

The Rutgers-Eagleton Poll was conducted by telephone from November 9-12, 2011 with a scientifically selected random sample of 753 New Jersey registered voters drawn from a list of all NJ registered voters. This sample contains a subsample of 383 voters. Data are weighted to represent known parameters in the New Jersey registered voter population, using gender, age, race, and Hispanic ethnicity matching to US Census Bureau data. All results are reported with these weighted data.

Voters are identified using two screening questions. The first asks awareness of which offices were up for election, using an open ended question. Respondents giving don't know or inaccurate answers were coded as non-voters. A second question asked where the respondent had voted. Respondents who said they did not vote and those who gave nonsensical voting locations were coded as non-voters. Finally, both the Assembly and Senate vote questions provided an explicit "did not vote in this election" option. Respondents who said they did not vote for both offices were coded as non-voters. Any respondent who was not coded a non-voter in this manner was coded as a voter in the sample.

All surveys are subject to sampling error, which is the expected probable difference between interviewing everyone in a population versus a scientific sampling drawn from that population. The sampling error for 753 registered voters is +/-3.6 percentage points, at a 95 percent confidence interval. Thus if 50 percent of New Jersey registered voters favored a particular position, one would be 95 percent sure that the true figure would be between 53.6 and 46.3 percent (50 +/-3.6) had all New Jersey registered voters been interviewed, rather than just a sample. For the sample of 383 voters, the sampling error is +/-5.0 percentage points. Sampling error increases as the sample size decreases, so statements based on various population subgroups are subject to more error than are statements based on the total sample. Sampling error does not take into account other sources of variation inherent in public opinion studies, such as non-response, question wording or context effects. This Rutgers-Eagleton Poll was fielded by Braun Research Incorporated. The questionnaire was developed and all data analysis was completed in house. The Rutgers-Eagleton Poll is paid for and sponsored by the Eagleton Institute of Politics, Rutgers University, a non-partisan academic center focused on the study and teaching of politics and the political process.

Weighted Sample Characteristics 753 New Jersey Registered Voters			
<i>Based on Registration Status</i>			
34% Democrat	47% Male	15% 18-29	72% White
46% Independent	53% Female	35% 30-49	10% Black
21% Republican		28% 50-64	9% Hispanic
		21% 65+	8% Others